

# GR-SERIES

## Guide Rail System

**Liberty Pumps®**

A Family and Employee Owned Company

### Features

- 2" or 3" Discharge FNPT
- Heavy cast iron construction
- Rugged one rail design with auto-guide feature
- 1-1/4" Guide pipe FNPT (guide rail pipe not included)
- Heavy-duty nitrile sealing grommet
- Upper cast iron rail support bracket provided
- Powder coated for corrosion resistance

### Models Available For

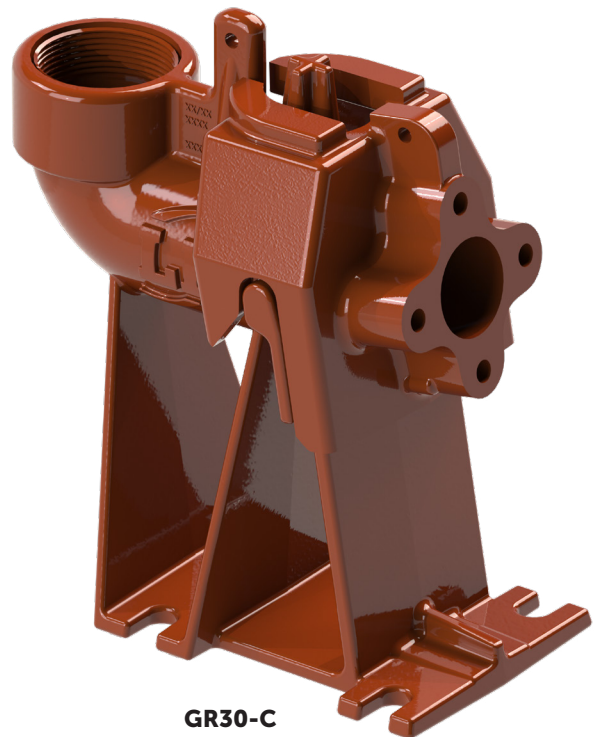
FL, LE, LEH, LGH, LGV, LSG300, LSG500, PRG, and X-Series Pumps



**GR22**



**GR30**



**GR30-C**

innovate. evolve.

# GR-Series

## Specifications

### Material

Class 25 Gray Cast Iron  
(Bronze claw on "NS" models)

### Weight

GR22 – 38 lbs  
GR30 – 46 lbs  
GR30-C – 60 lbs

### Seal

Heavy Duty Nitrile

### Rail Size

1-1/4" (Not Included)

### Rail Support Bolts

Stainless Steel

### Discharge

GR22 - 2" Female NPT  
GR30 - 3" Female NPT  
GR30-C - 3" Female NPT

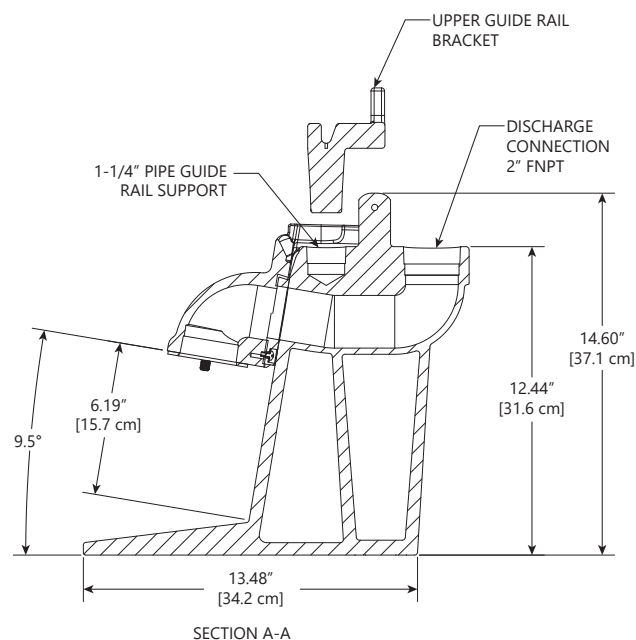
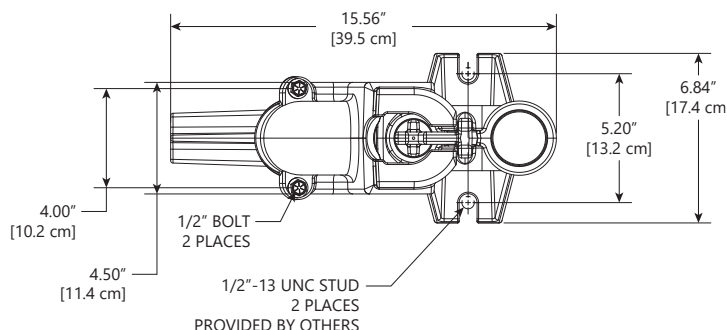
### Maximum Pump Weight

GR22 – 350 lbs  
GR30 – 350 lbs  
GR30-C – 300 lbs

### Upper Rail Support

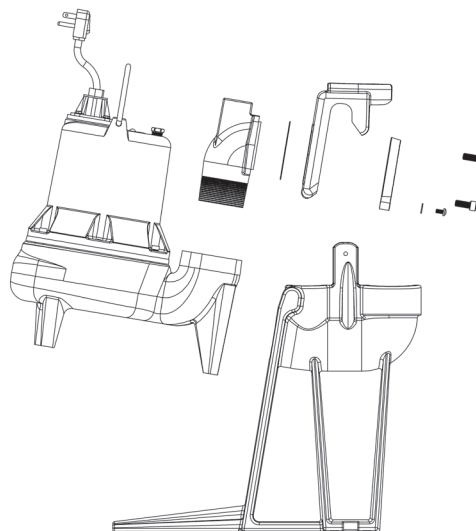
Class 25 Gray Cast Iron

## Dimensional Data – GR22 - 2"

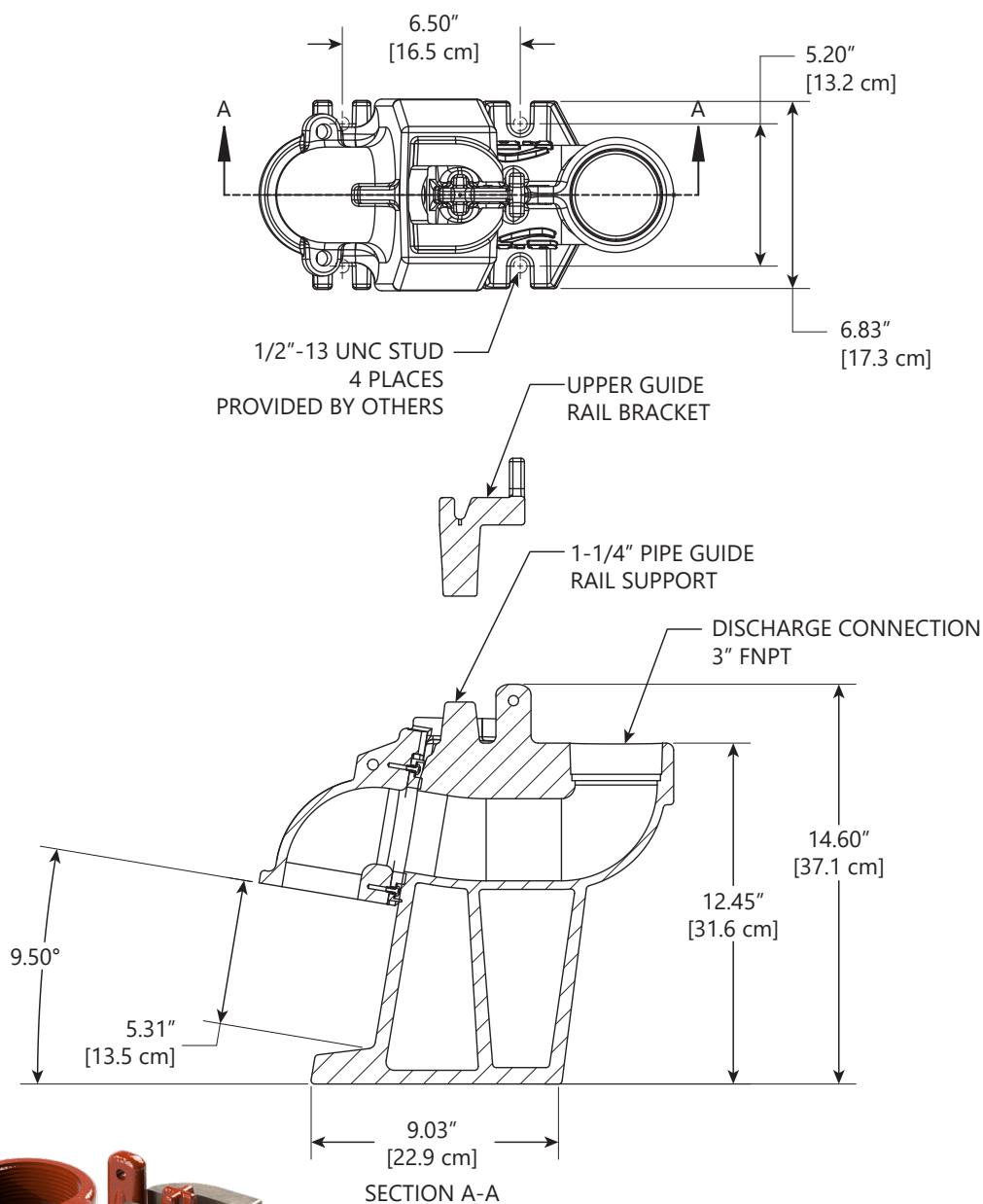


### GR22-S

Split pump claw allows fitment to PRG, LE40 and LE50-Series



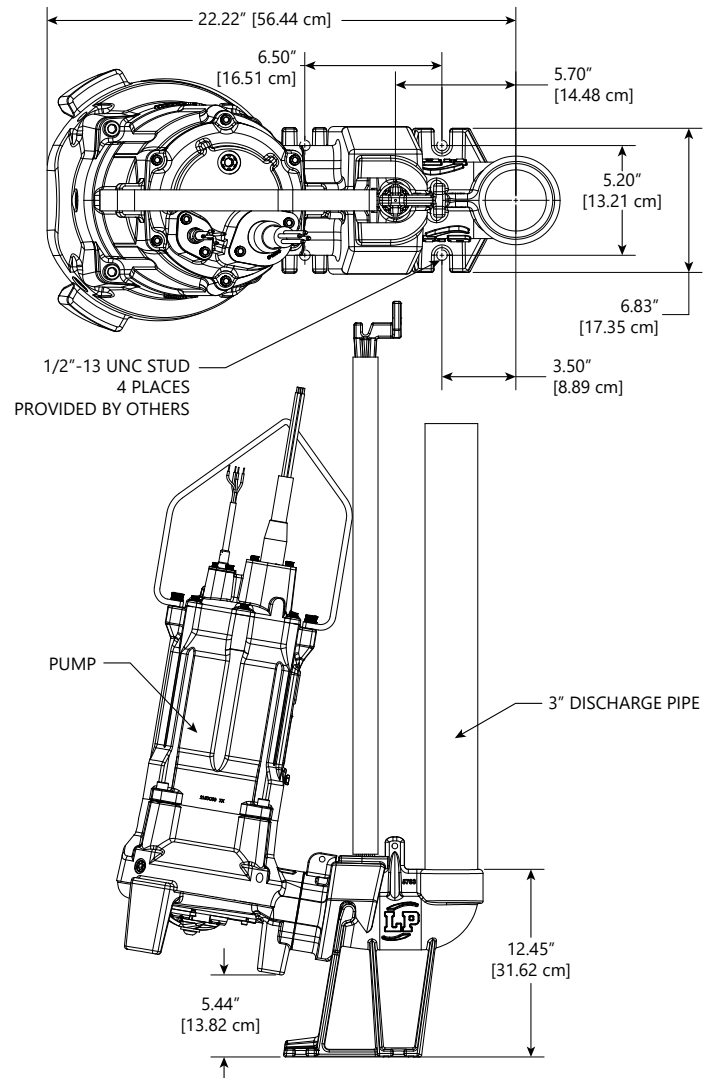
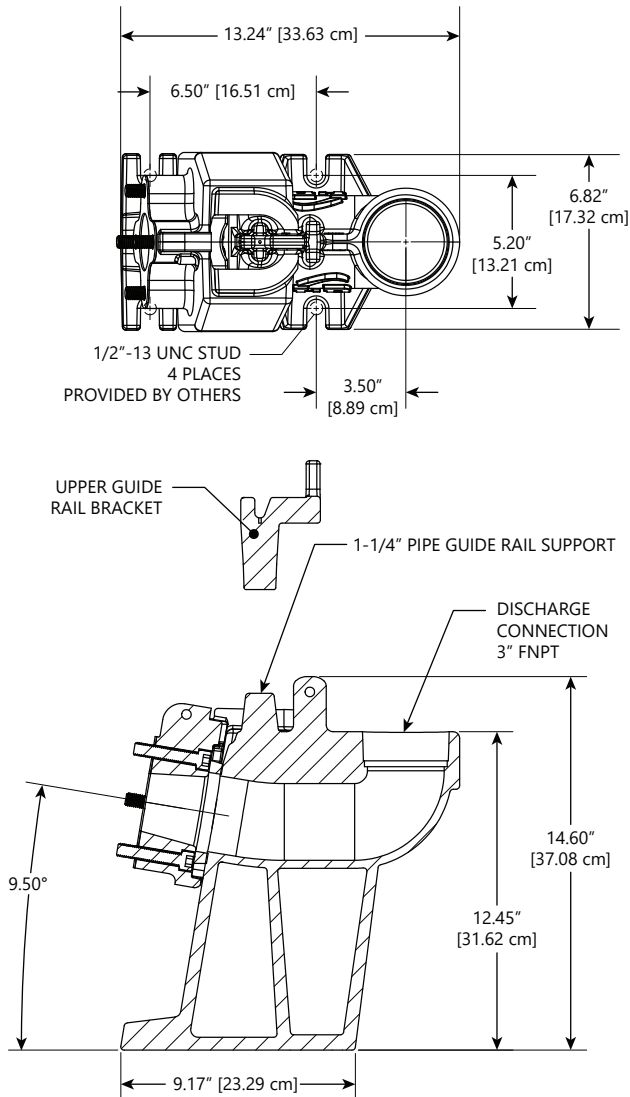
**Dimensional Data – GR30 - 3"**



**GR30NS**  
"NS" non-sparking models feature a bronze claw for installation in hazardous locations and fitment with Liberty Pumps X-Series pumps.

# GR-Series

## Dimensional Data – GR30-C - 3"



## Models

MODEL	DISCHARGE	SERIES
*GR22-FL	2"	FL50, FL60, FL70, FL100, FL150, FL200
*GR22NS-FL	2"	XFL50, XFL70, XFL100, XFL150
*GR22-LE	2"	LE70, LE100, LEH100, LEH150, LEH200
*GR22NS-LE	2"	XLE50, XLE70, XLE100, XLE150
GR22-S	2"	LE40, LE50, PRG
GR30	3"	LE70, LE100, LEH100, LEH150, LEH200
GR30-C	3"	LGV03, LGV05, LGV07, LGH03, LGH05, LGH07, LSGH03, LSGH05, LSGV03, LSGV05
GR30NS	3"	XLE50, XLE70, XLE100, XLE150

\*2" Internal female thread on pump mating claw allows for mounting to other Liberty Pumps models and models from other manufacturers.