



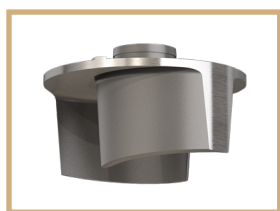
Proudly made in the USA
with US & global components

Liberty Pumps®

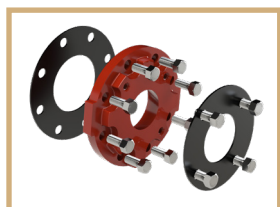
commercialseries

LSS-Series

- 3" ANSI horizontal discharge
- 2-1/2" Solids handling
- 3" Vertical discharge
- Cast iron two-vane impeller



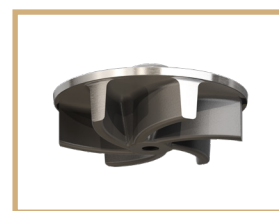
Two-Vane Impeller



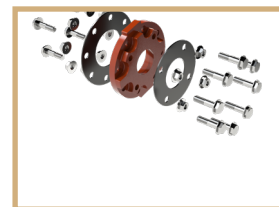
Optional 3" to 4" ANSI
Adapter Kit K001901
(sold separately)

LSV-Series

- 4" ANSI horizontal discharge
- 3" Solids handling
- 4" Vertical discharge
- Cast iron vortex impeller



Vortex Impeller



Optional 4" to 3" ANSI
Adapter Kit K002027
(sold separately)

LSS/LSV Features

- Available in 1.5, 2, 3 or 5 HP
- Single mechanical silicon carbide shaft seal
- Cast iron construction with epoxy powder coating
- Quick-connect power cords in 35', 50' or 100' lengths

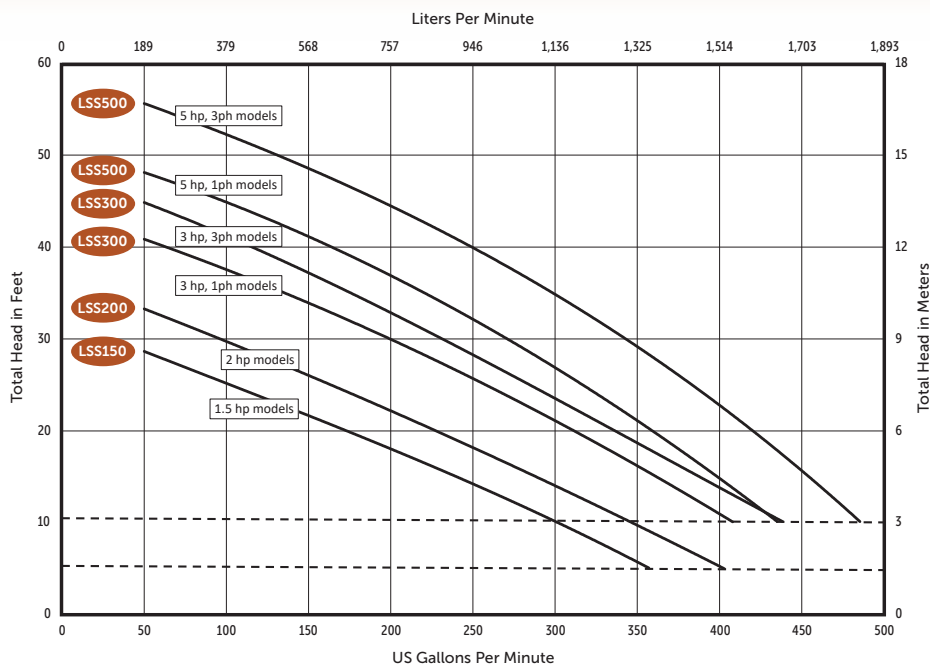
- Available in 208/230V single phase or 208-575V three phase
- Warranty: Requires online startup form to be completed
 - 18 months from the date of installation
 - 24 months from date of manufacture

See LSS or LSV sales literature for complete product specifications

commercialseries

PERFORMANCE CURVES

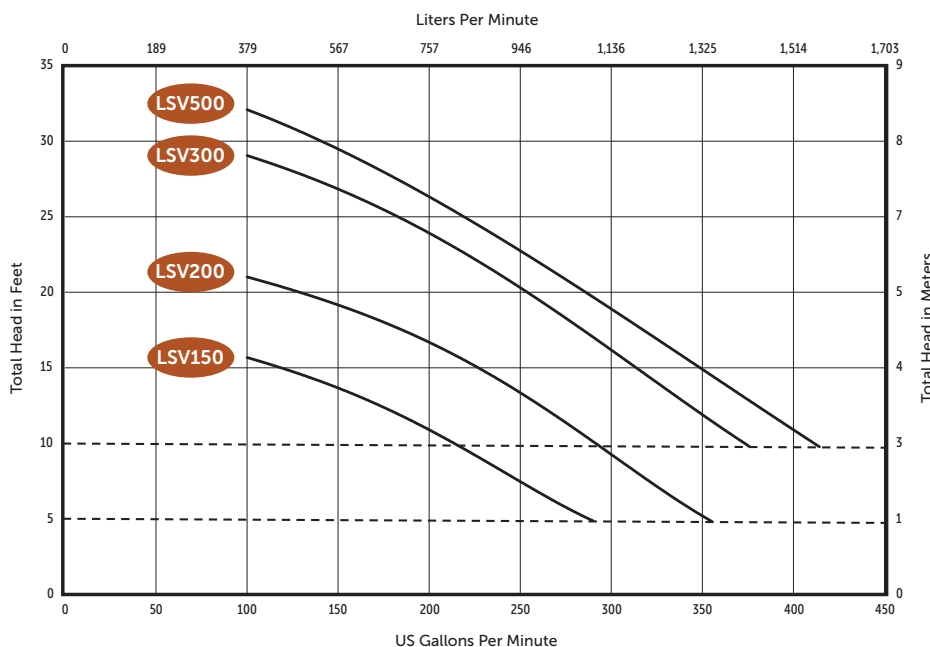
LSS-Series 60 Hz



LSS150 and LSS200 Series models have a 5 ft. minimum head requirement.
LSS300 and LSS500 Series models have a 10 ft. minimum head requirement



LSV-Series 60 Hz



LSV150 and LSV200 Series models have a 5 ft. minimum head requirement.
LSV300 and LSV500 Series models have a 10 ft. minimum head requirement.

