

Liberty Pumps®

A Family and Employee Owned Company

**Leaders in
Groundwater
Protection**



Sump Pumps



Performance

Cool Running or
Cast Iron Construction?

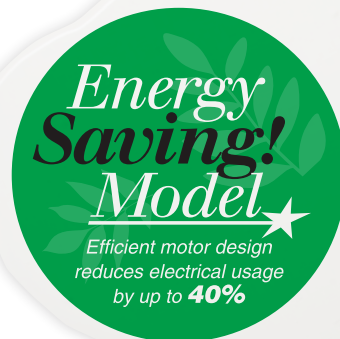


Sleek fins are not just for looks! All those ribs increase the surface area that is touching that nice cool sump water - providing extra cooling for the motor. The cooler the motor – the longer you can expect it to last! Liberty Pumps 230 and 450-Series pumps are 225% more efficient at cooling the motor than our cast iron models. Now that's cool running!

Where's the beef? It's in our model 257. The classic 1/3 hp sump pump is loaded with features. Combine a one-piece cast iron body with advanced VMF switch technology and you have a winning combination. All the weight, performance and features of a true classic. Put it in your pit and forget it.

Who wants MORE seals? Not Liberty! When your pump spends its life under water, fewer seals mean greater reliability. Our most popular models feature the VMF (vertical magnetic float switch). This advanced design eliminates old-school toggle switches which require an extra rubber boot to seal the switch arm extending from the switch cover. Over time, those boots can crack, dry rot or just plain wear out – allowing water into the switch and killing the pump. With the VMF design, the switch is operated by a magnet - no switch arm and no extra seal!

Want efficiency? Get off the amps! Liberty Pumps sump pumps feature PSC (permanent split capacitor) motors with lower amp draw. This motor style, combined with efficient impeller and hydraulic design, gives Liberty Pumps the advantage when it comes to reducing power consumption but not performance. Up to 40% less electrical usage compared to other designs of the same horsepower. Multiply that by the number of times your pump may cycle – and you could have some serious savings on that electric bill!



230-Series

1/3 hp

1-1/2" Discharge

3/8" Solids Handling

A high performance submersible with deep finned aluminum housing for superior motor cooling.

Features

- Energy efficient motor - only 5.2A
- Finned aluminum motor housing for improved cooling

- Powder coated for corrosion resistance
- Permanently lubricated upper and lower bearings
- Vortex-style impeller reduces clogging by foreign materials
- Quick-connect power cord
- Oil-filled thermally protected motor



Also available
with wide-angle/
piggy back float switch



**225% more cooling
capacity than
cast iron!**

Model 237 Shown

Cool Running.



250-Series

1/3 hp

1-1/2" Discharge

1/2" Solids Handling

Liberty Pumps best-selling sump pump provides rugged cast iron construction with solid performance. A true classic.

Features

- Energy efficient motor - only 5.2A
- Oil-filled motors with thermal overload protection
- Vortex-style impellers reduce clogging by foreign materials
- Quick-connect power cord

Features Liberty Pumps unique "uni-body" casting — a one-piece cast iron housing that eliminates the motor seal ring.



**Also available
with wide-angle/
piggy back float
switch**



Model 257 Shown

Classic Cast Iron.



S30-Series

1/3 hp

1-1/2" Discharge

A competitively priced 1/3 hp sump pump with higher-priced pump features!



Features

- Oil-filled motor with thermal overload protection
- Vortex-style impeller reduces clogging by foreign materials
- Dual bearing design
- Higher inlet ports reduce potential for debris to enter pump

Model S37

Vertical float switch

Model S37-P

Vertical float switch with piggyback series plug

Model S38

Wide-angle float switch with series plug

240-Series

1/4 hp

1-1/2" Discharge

At 22 lbs – the 240-Series is the heaviest built 1/4 hp pump on the market! Rock solid and dependable, this series combines heavy construction with an attractive price.



Model 247 Shown

Features

- Oil-filled motors with thermal overload protection
- Vortex-style impeller reduces clogging by foreign materials

Features Liberty Pumps unique "uni-body" casting — a one-piece cast iron housing that eliminates the motor seal ring.



Also available with wide-angle/ piggy back float switch

450-Series

1/2 hp 115V

1-1/2" Discharge

3/8" Solids Handling

Built like our cool running 230-Series but with more horsepower, the 450-Series features an efficient 1/2 hp motor – providing more gallons per minute and higher pumping head.



Model 457 Shown

Features

- Energy efficient motor - only 7.5A
- Finned aluminum motor housing for improved cooling
- Powder coated for corrosion resistance
- Permanently lubricated upper and lower bearings
- Vortex-style impeller reduces clogging by foreign materials
- Quick-connect power cord
- Oil-filled thermally protected motor



**Also available
with wide-angle/
piggy back float
switch**

280-Series

1/2 hp 115V

1-1/2" Discharge

3/4" Solids Handling

Take our classic 1/3 hp cast iron pump - add some more horsepower, and you have the 280-Series. Heads to 37 feet and flow rates to 68 GPM, the 280-Series is a solid choice for applications requiring more performance.



Model 287 Shown

Features

- Oil-filled motors with thermal overload protection
- Vortex-style impellers reduce clogging by foreign materials

Liberty Pumps unique "uni-body" casting is a one-piece cast iron housing that eliminates the motor seal ring.

208-230V models available



**Also available
with wide-angle/
piggy back float
switch**

290-Series

3/4 hp

1-1/2" Discharge

3/4" Solids Handling

King of the sump pump class, the 290 combines huge pumping performance with heavy construction. With maximum flows to over 80 GPM, this series will handle your worst water problems.



Model 297 Shown

Features

- Quick-connect power cord
- Oil-filled thermally protected motor
- Permanently lubricated bearings
- Uni-body casting
- Stainless-steel fasteners and rotor shaft
- Vortex-style impeller

208-230V models available



**Also available
with wide-angle/
piggy back float
switch**



SMART ALARMS.

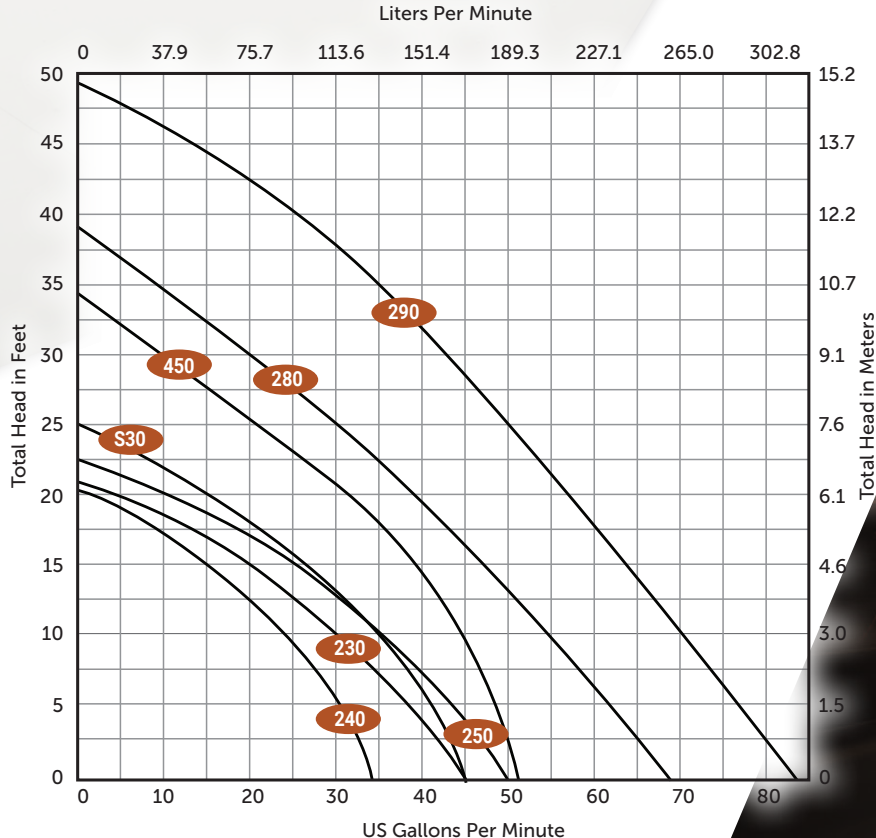
ALM-EYE SERIES

Intelligent pump monitoring and alarm notifications sent to your smart device - anywhere in the world.




NightEye
Wireless Enabled Product

Sump Pump Performance Curves



60 Hz

7 different
series to
choose from

For complete product
specifications for pumps
listed in this brochure, consult
the Liberty Pumps website at
www.LibertyPumps.com

Model Selection



MODEL	CONSTRUCTION	HP	VOLTS	AMPS	DISCHARGE	FLOAT SWITCH STYLE	MIN. PIT DIAMETER
240-Series							
241	Cast Iron	1/4	115	6.0	1-1/2"	Wide-angle (integral float switch)	14"
243	Cast Iron	1/4	115	6.0	1-1/2"	Wide-angle (piggyback plug)	14"
247	Cast Iron	1/4	115	6.0	1-1/2"	VMF Vertical Magnetic Float	10"



S30-Series

S37	Poly and Cast Iron	1/3	115	6.5	1-1/2"	Vertical float switch	14"
S37-P	Poly and Cast Iron	1/3	115	6.5	1-1/2"	Vertical float switch (piggyback plug)	14"
S38	Poly and Cast Iron	1/3	115	6.5	1-1/2"	Wide-angle (piggyback plug)	14"



230-Series

231	Poly and Finned Alum.	1/3	115	5.2	1-1/2"	Wide-angle (integral float switch)	14"
233	Poly and Finned Alum.	1/3	115	5.2	1-1/2"	Wide-angle (piggyback plug)	14"
237	Poly and Finned Alum.	1/3	115	5.2	1-1/2"	VMF Vertical Magnetic Float	10"



250-Series

251	Cast Iron	1/3	115	5.2	1-1/2"	Wide-angle (integral float switch)	14"
253	Cast Iron	1/3	115	5.2	1-1/2"	Wide-angle (piggyback plug)	14"
257	Cast Iron	1/3	115	5.2	1-1/2"	VMF Vertical Magnetic Float	10"



MODEL	CONSTRUCTION	HP	VOLTS	AMPS	DISCHARGE	FLOAT SWITCH STYLE	MIN. PIT DIAMETER
450-Series							
451	Poly and Finned Alum.	1/2	115	7.5	1-1/2"	Wide-angle (integral float switch)	14"
453	Poly and Finned Alum.	1/2	115	7.5	1-1/2"	Wide-angle (piggyback plug)	14"
457	Poly and Finned Alum.	1/2	115	7.5	1-1/2"	VMF Vertical Magnetic Float	10"



280-Series

281	Cast Iron	1/2	115	8.5	1-1/2"	Wide-angle (integral float switch)	14"
283	Cast Iron	1/2	115	8.5	1-1/2"	Wide-angle (piggyback plug)	14"
287	Cast Iron	1/2	115	8.5	1-1/2"	VMF Vertical Magnetic Float	10"



290-Series

291	Cast Iron	3/4	115	10.4	1-1/2"	Wide-angle (integral float switch)	14"
293	Cast Iron	3/4	115	10.4	1-1/2"	Wide-angle (piggyback plug)	14"
297	Cast Iron	3/4	115	10.4	1-1/2"	VMF Vertical Magnetic Float	10"

Many pump options available including manual models (no float switch), longer cord lengths, and 230V models.
Consult the website or Liberty Pumps for complete product specifications.

www.LibertyPumps.com

Liberty Pumps®

A Family and Employee Owned Company

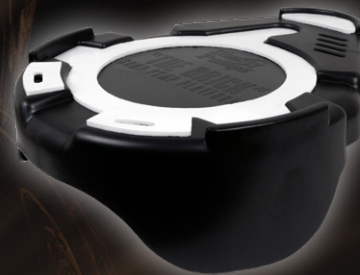
7000 Apple Tree Avenue Bergen, New York 14416

Phone 800-543-2550 Fax 585-494-1839

Sold By:



Ask about "The Brick" sump pump platform



Quiet Check Valves 1-1/2" & 2"

**QCV150, QCV200,
QCV150-CL, and QCV200-CL**



www.LibertyPumps.com



Specifications subject to change without notice.

Copyright © Liberty Pumps, Inc. 2021 All rights reserved. LLIT006781 R1220